



# GMT MONTHLY MEMBERSHIP PROGRESS REPORT

Results as of: 5/31/2020

## GMT Constitutional Area 8, Group E

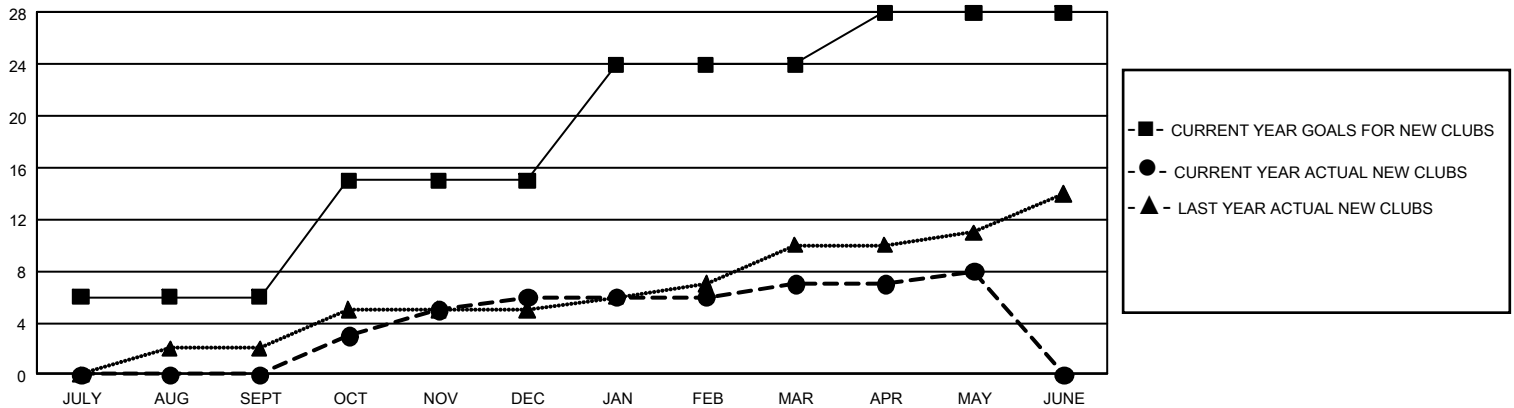
GMT: OPEN

REPORT DOES NOT INCLUDE CLUBS IN UNDISTRICTED AREAS.

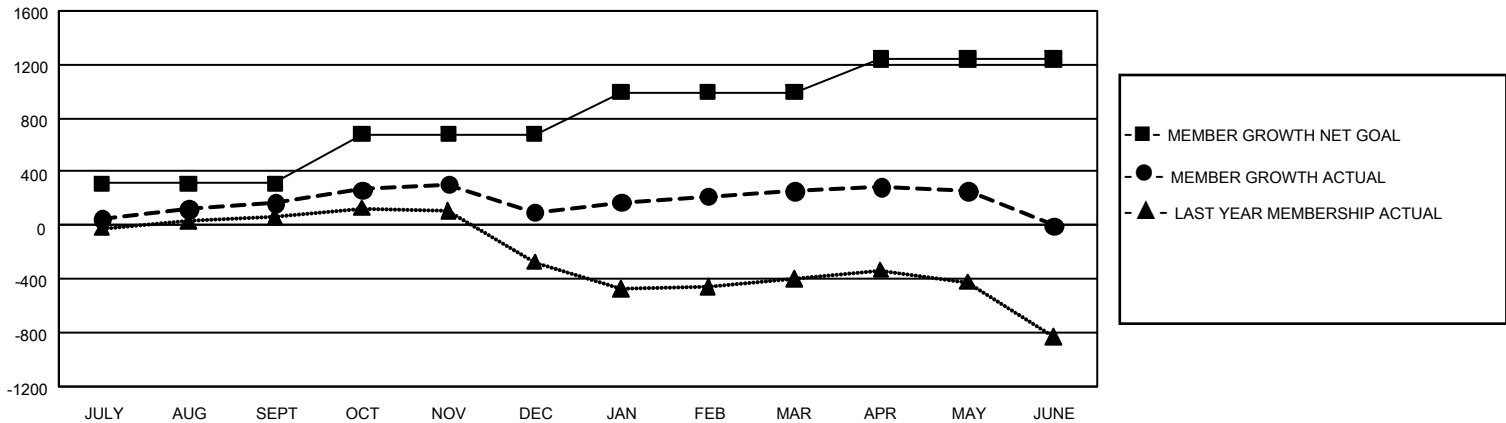
| Clubs                 |               |           |               |
|-----------------------|---------------|-----------|---------------|
| RESULTS FOR 2019-2020 |               |           |               |
| QUARTER               | NEW CLUB GOAL | NEW CLUBS | DROPPED CLUBS |
| JULY/AUG/SEPT         | 18            | 0         | 2             |
| OCT/NOV/DEC           | 27            | 6         | 9             |
| JAN/FEB/MAR           | 27            | 1         | 1             |
| APR/MAY/JUNE          | 12            | 1         | 0             |

| Members               |                        |                      |  |
|-----------------------|------------------------|----------------------|--|
| RESULTS FOR 2019-2020 |                        |                      |  |
| QUARTER               | MEMBER GROWTH NET GOAL | MEMBER GROWTH ACTUAL | DROPPED MEMBERS ACTUAL (including transfers) |
| JULY/AUG/SEPT         | 936                    | 357                  | 164  |
| OCT/NOV/DEC           | 1,101                  | 400                  | 460  |
| JAN/FEB/MAR           | 951                    | 225                  | 50   |
| APR/MAY/JUNE          | 735                    | 92                   | 88   |

GOALS AND ACTUAL NEW CLUBS CUMULATIVE



GOALS AND ACTUAL MEMBERS CUMULATIVE



|                          |   |  |                       |
|--------------------------|---|--|-----------------------|
| <b>DROPPED CLUBS: 12</b> | 151 CLUBS OF 254 ADDED 1 OR MORE NEW MEMBERS              | <b>GENDER DISTRIBUTION</b>                 |                       |
|                          |   | MALE 3,799 (59.81%)                        | FEMALE 2,553 (40.19%) |
| <b>DROPPED MEMBERS</b>   |   | <b>TOTAL FAMILY UNIT MEMBERS 1,582</b>     |                       |
| DECEASED 14              | <a href="#">CLICK HERE FOR CUMULATIVE MEMBERSHIP DATA</a> | <b>FAMILY MEMBERS PAYING HALF DUES 925</b> |                       |
| CLUB CANCELLED 154       |   |  |                       |
| OTHER 594                |   |  |                       |
| <b>TOTAL 762</b>         |   |  |                       |